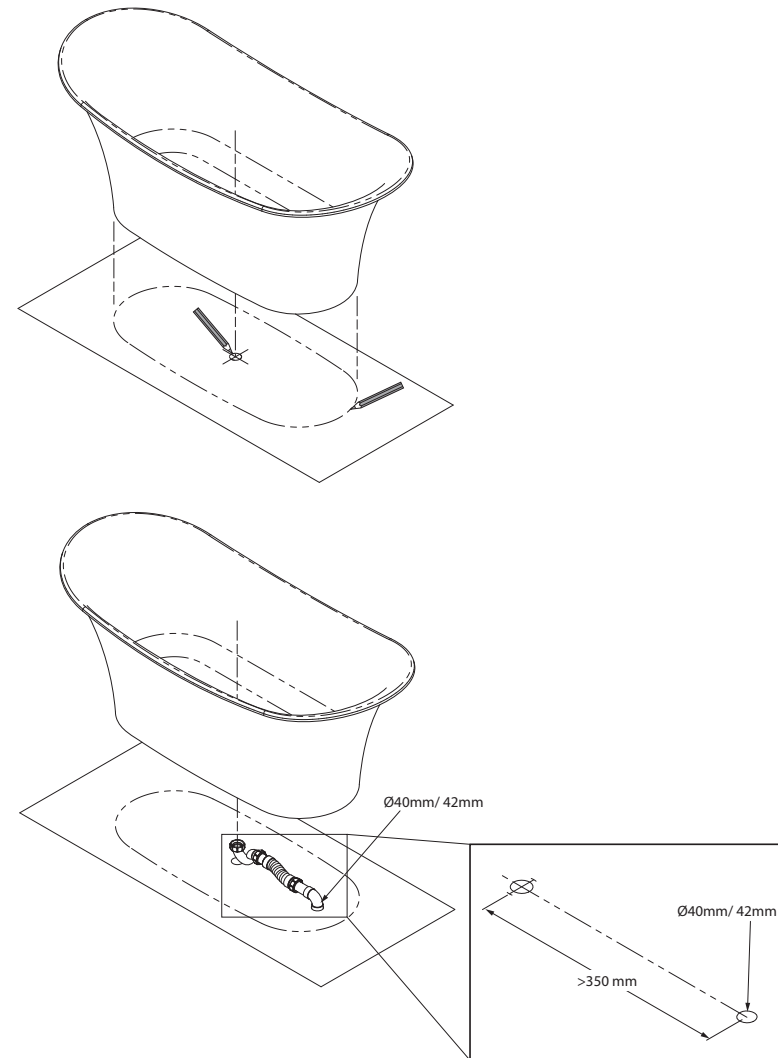


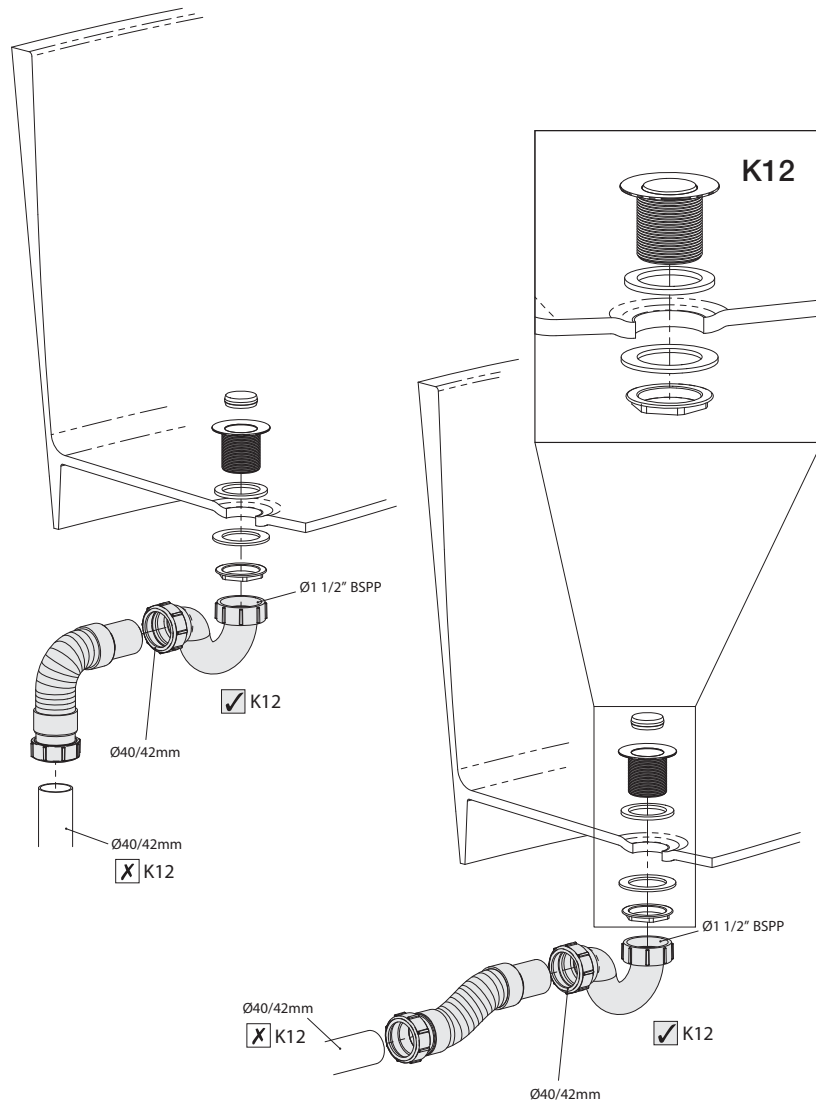
Toulouse **1**

TOU-1-1



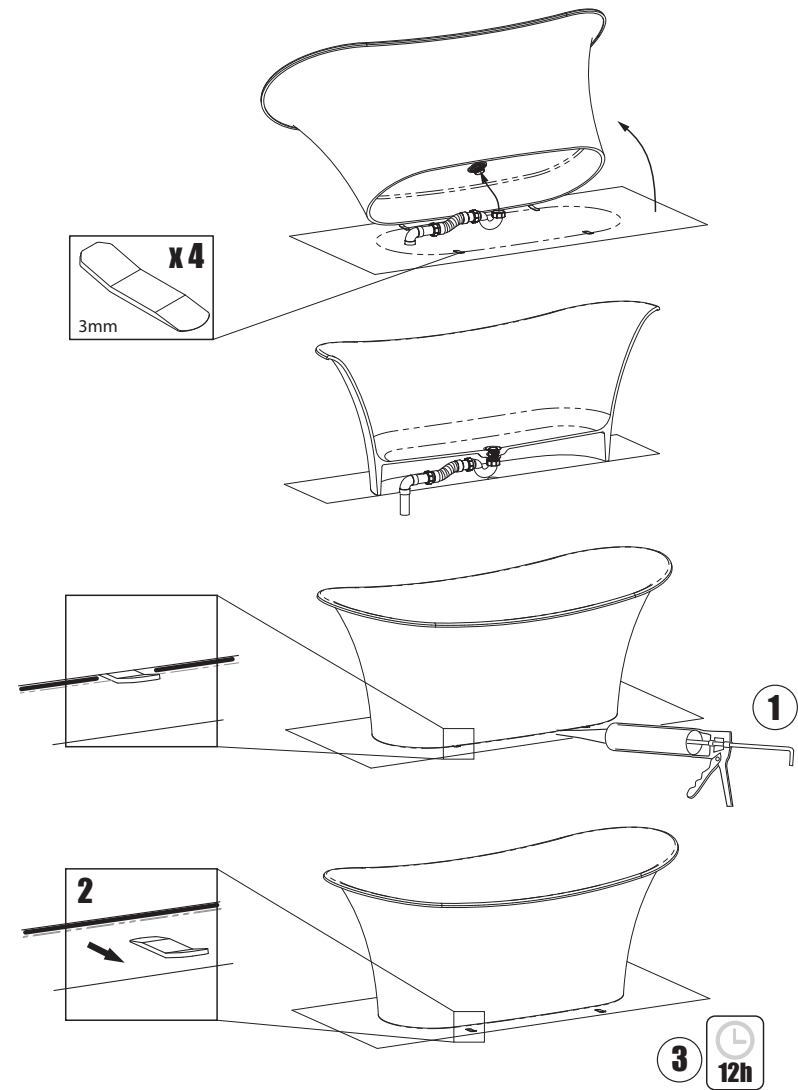
Toulouse **2**

TOU+K12-1A-1



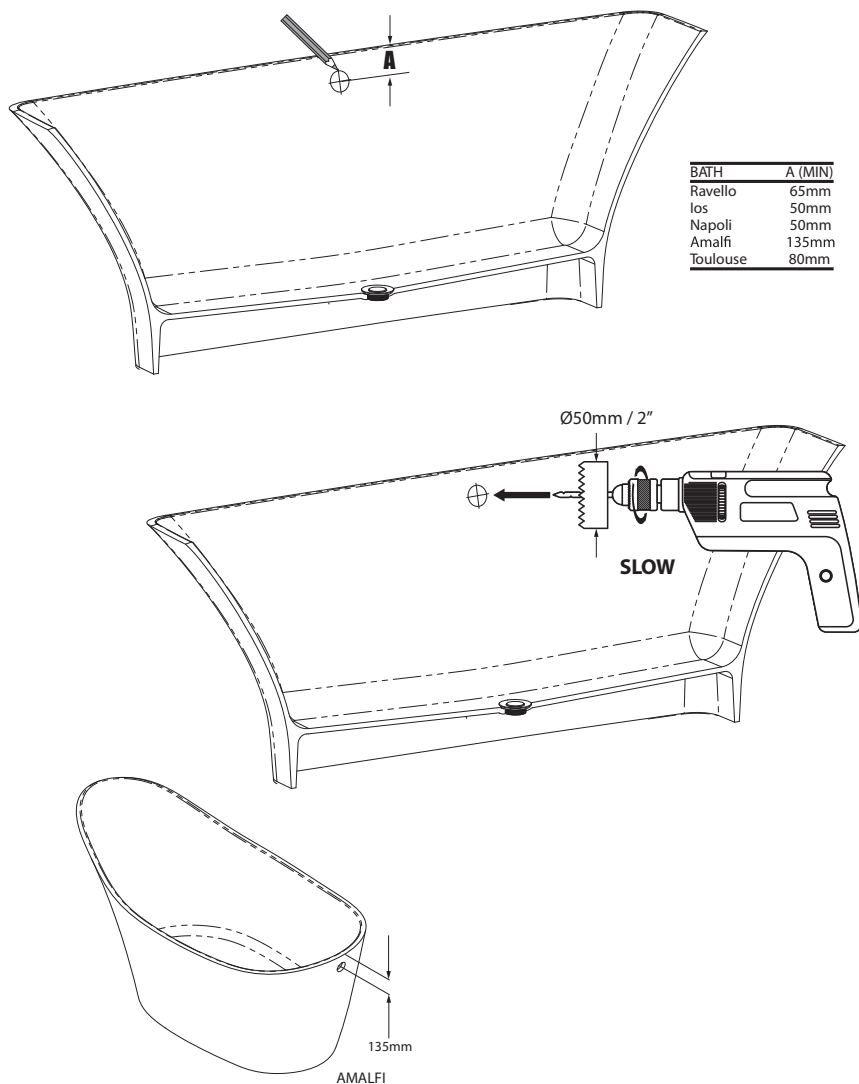
Toulouse **3**

TOU+K12-1-1



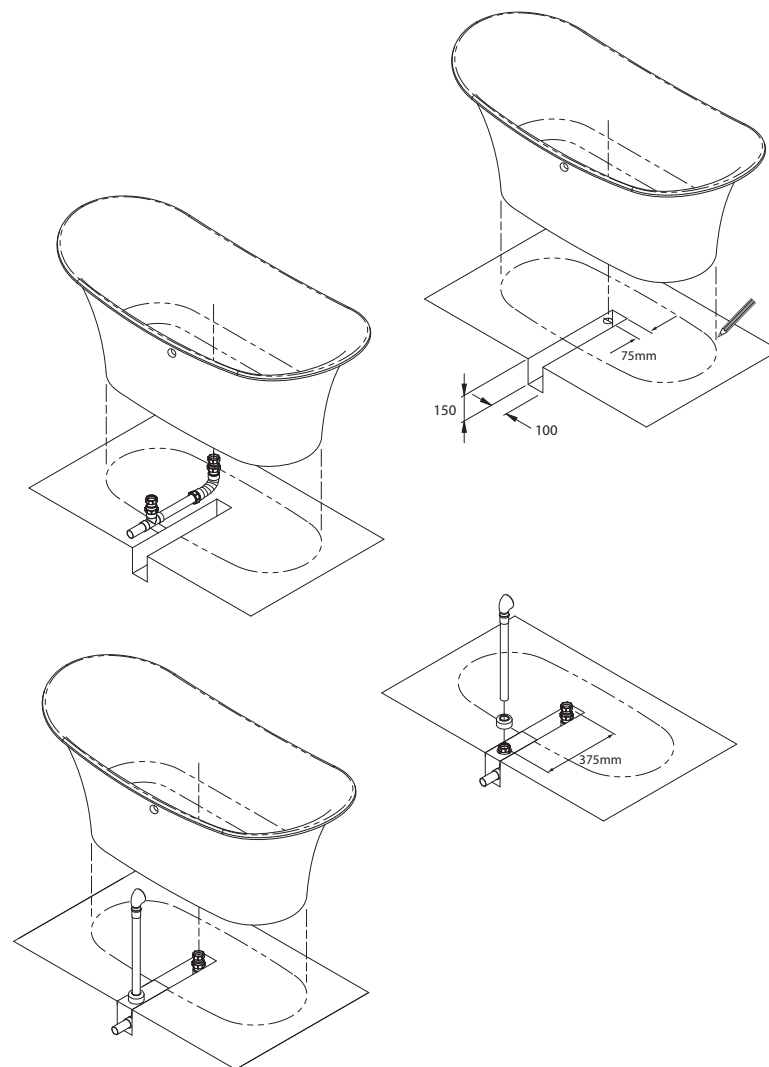
Toulouse **4**

TOU+K12-1B-1



Toulouse **5**

OH-1-1



Toulouse **6**

TOU+K17-2A-1

NAPOLI

This technical drawing illustrates the installation of a floor drain assembly for a bathtub. The assembly is shown in a side view, with the bathtub's curved bottom indicated by a dashed line. The drain assembly consists of a vertical pipe that connects to a horizontal pipe. The horizontal pipe is connected to a flexible, corrugated hose, which is then connected to a vertical pipe that leads down to a floor drain. The floor drain is shown as a circular opening in the floor. The drawing is labeled 'NAPOLI' in the top left corner.

Technical diagram illustrating the assembly of the Amalfi Ravello Toulouse faucet. The diagram shows the main faucet body, the handle assembly, and the cartridge assembly.

Handle Assembly:

- Handle: Ø38mm, Ø1 1/2"
- Handle Cap: K17 (checked) or K17 (crossed out)

Cartridge Assembly:

- Cartridge: Ø1 1/2" BSPP
- Cartridge Cap: Ø1 1/2" BSPP
- Cartridge Body: Ø1 1/2"
- Cartridge Seal: Ø1 1/2" BSPP

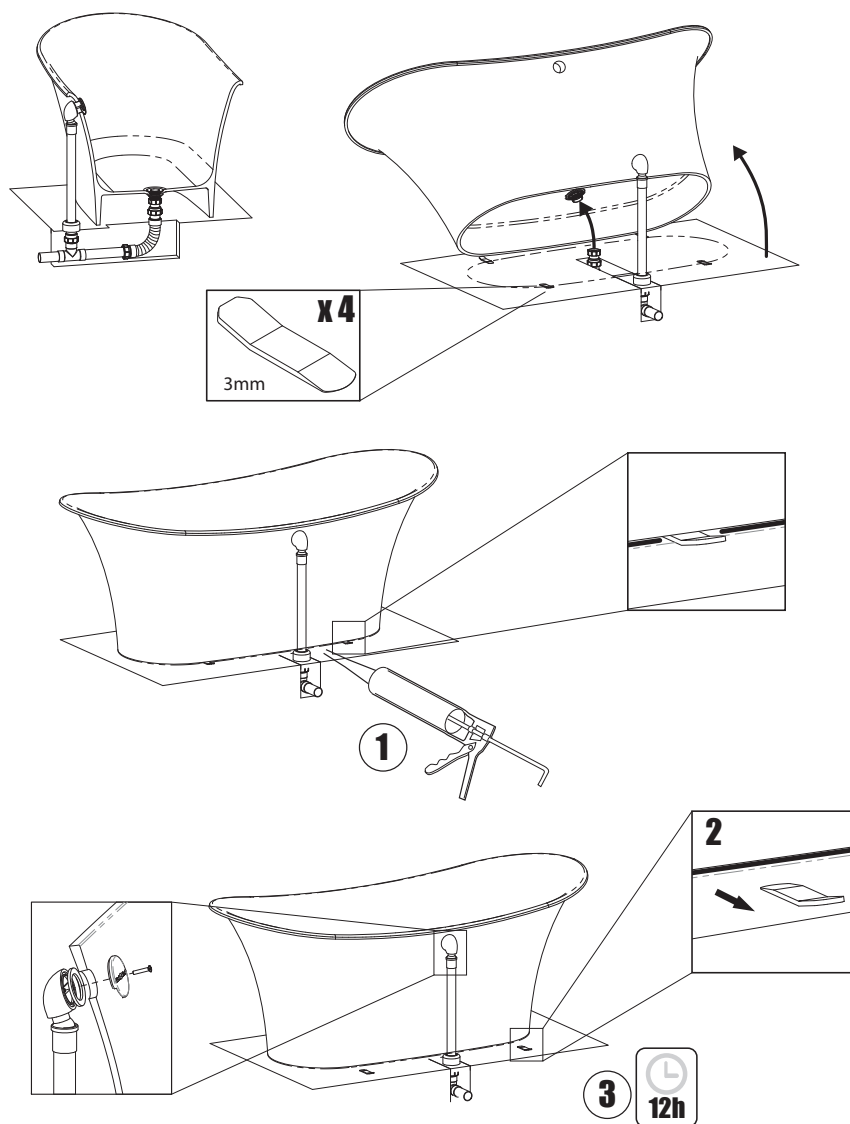
Faucet Body Assembly:

- Faucet Body: Ø40/42mm
- Faucet Body Cap: Ø1 1/4"
- Faucet Body Seal: Ø1 1/2"
- Faucet Body Body: Ø40/42mm
- Faucet Body Cap: Ø1 1/2"

IOS AMALFI RAVELLO TOULOUSE

NAPOLI

TOU+K17-1-1



Toulouse

9

TOU+K17-2B-1